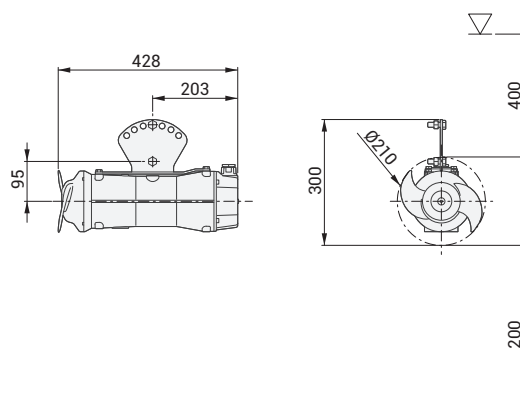




ZMD 020A A 0.75/4 HA 010



23 Kg (stand and guiding system excluded)

Product

Type	MIXER
Name	ZMD 020A A 0.75/4 HA 010
Configured	-
Standard	CE
ATEX marking	-

Motor

Rated Voltage	400 V
Frequency	50 Hz
Motor phases	3
Number of poles	4
Incoming power P2	0.75 kW
Electric power P1	1.0kW
Rated current	2.0 A
rpm	1396 rpm
Efficiency	76%
Cos φ	0.719
Rated torque	5.1 Nm
Start	DOL
Starting current	8.7 A
Starting torque	11.9 Nm
Degree of protection	IP 68
Insulation class	H
Motor efficiency class ref.	

Gear unit

Type	-
Gear ratio	1

Propeller

Name	020A
Rated diameter	200 mm
Number of blades	2
rpm	1396 rpm
Pp2	0.48 kW
Propeller thrust	155 N
Jet ring	-

Cable

Type	4G1.5
Length	10 m

Monitoring

Thermal protector	-
Leakage sensor	-

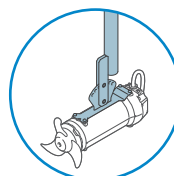
Operating limits

Ambient temperature	0 ÷ 40°C
Max. density treated liquid	1100 Kg/m ³
pH treated liquid	6-14
Max. start per hour	20 /h (equally distributed)
Max. acoustic pressure level	Max 70 dB (A)
Operating mode	S1 – Continuous use

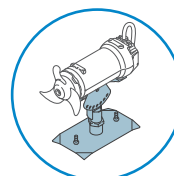
Construction materials

Case	Cast iron EN-GJL-250
Gear box	-
Propeller	AISI 316 (optional AISI 329)
Jet ring	-
Shaft	AISI 431
Mechanical seal (motor side)	Silicon carbide
Mechanical seal (propeller side)	Silicon carbide
Painting	Bi-epoxy 200 µm (optional 400 µm)
Screws	Stainless steel A2-70 (optional A4)
Gaskets	NBR
Fixing system	AISI 304 stainless steel (optional AISI 316)

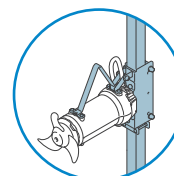
Installation



STANDARD



OPTIONAL



OPTIONAL

50 x 50
60 x 60
80 x 80